



AFTERMARKET PRODUCTS

UPGRADES | SERVICE | PARTS

Table of Contents

Aftermarket Catalog 5

Services & Parts Provided 7

Training Course: RL-420 Rotary Labeler 8

Training Course: VR-72 Trunnion Labeler 9

Aftermarket Service Agreements 10

Rotary Labeler Kits (Base 827/828/829) 11

- Full Annual rebuild kit for trapped cam lower kit 11
- Full Annual rebuild kit for open cam design rotary 12
- Full Annual rebuild kit for Upper cam 13

Weiler Label Head Standard & X2 Model 14

- Full Annual rebuild kit Push Pull Legacy 4" & 6" 14

Rotary Labeler Kit (Base 827/828/829) 15

- Rotary Adapter Bearing Replacement Assembly 15
- Rotary Adapter Bearing Replacement Assembly 16

Upgrades & Retrofits 17

- Full Annual rebuild kit Push Pull Legacy 4" & 6" 17

Upgrades & Retrofits 18

- Performance Level D iso 13849-1
Compliant Retro Guarding Package 18
- SLC to compactlogix conversion 19
- Servo Drive Obsolescence 20

Upgrades & Retrofits 21

- Full Annual rebuild kit Push Pull Legacy 4" & 6" 21

Field Service 22

- Third Party Accumulation Tables 22

Aftermarket Catalog



INTRODUCTION

For over 30 years WLS has designed, manufactured, integrated, and supported some of the most sophisticated and advanced rotary and inline pressure sensitive labeling equipment and solutions in the marketplace.

WLS has active machine installations worldwide and offers an industry leading two-year warranty on all new equipment. With one of the most extensive North American field support networks in the industry, and with the addition of European-based sales and service, WLS is well placed to deliver world-class support to all our customers regardless of geographical location.

At WLS, we pride ourselves on having aftermarket service that is among the best – if not the best – in the industry. When you select WLS as a partner, you will have the peace of mind that comes from knowing that we will take care of you, whether your need is emergency service, preventive maintenance, spare parts, upgrades, or retrofits, in addition to site installations and training.

Customer satisfaction is our focus!

Because of our unwavering service-driven culture, our customers have repeatedly indicated their overall satisfaction with WLS quality and services.

All our US based field service technicians are centrally located at our head office in Moorestown, NJ. Each one of our technicians spends about 50% of their time working on the shop floor. Having the close connection to the manufacturing facility gives our technicians the ability to stay up to date with all our equipment and have an explicit understanding of manufacturing, installation, and maintenance of each machine that leaves our facility. This provides our customers with consistent, high quality and experience for remote and onsite support throughout the life of their machine.

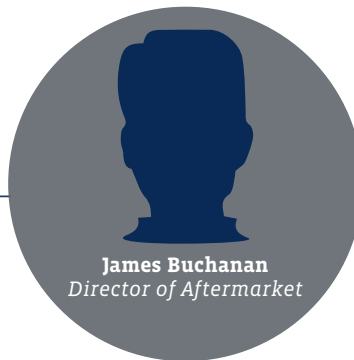
This catalog features some of our most popular aftermarket products and services. Please feel free to contact us using the contact information on the next page for any of your aftermarket needs. We look forward to partnering with you to ensure your equipment has a long and efficient service life.

Take a look...

Please browse this catalog to get an indication of some of the aftermarket solutions we offer to keep your machine running optimally.

Sincerely,

The WLS Aftermarket Team



SERVICE MANAGER



AFTERMARKET COORDINATORS



MACHINE RELIABILITY MANAGER



EUROPE SERVICE REPRESENTATIVE



Contact us today:

Email: WLS.Parts@ProMachbuilt.com

Call: 856-273-3377

SERVICES & PARTS PROVIDED

PARTS & SERVICES

We have a fully staffed Parts & Service department based in Moorestown, New Jersey, ready to address your parts and field service needs.

TRAINING

At WLS, we understand that the successful operation of any equipment is based on a sound understanding of all the functions and operations by operators, supervisors, and maintenance staff. With this in mind, we have developed extensive training courses which cover both theoretical and practical training on our equipment.

Training is a mix of classroom and hands on learning with all training material based exclusively on the machine that is being considered. Each trainee will receive a course handbook with a detailed explanation of all the relevant equipment components, their correct operation, and adjustments, as well as instruction in setup, location and repair of common faults that occur in general machine operation.

AFTERMARKET SERVICE AGREEMENTS

Customizable aftermarket service agreements, built on our renowned customer support system. Pay annually or rolling monthly agreements available.

REFURBISHMENT AND PM KITS

While we sell individual parts for all our equipment, we recognize the practicalities of changing out multiple parts at the same time. On many occasions, multiple wear parts may be due for replacement around the same time, or it may be more efficient to replace numerous related parts at one time due to the invasive work that is required to change some components.



UPGRADES & RETROFITS

The robust and high-quality equipment that WLS has become known to produce results in longevity and productivity that is unmatched in the industry.

As our machines age, various electrical components with a lifespan less than our equipment will need to be replaced. Due to technical advances in many areas, some technology and components that were installed on our equipment years ago are currently in "end-of-life-cycle" phase or are already obsolete. To serve our customers at the highest level, WLS proactively researches, designs and tests retrofit kits for equipment that may be affected. As a result, we can offer solutions for affected equipment that has been designed and tested and perform an upgrade with maximum efficiency to ensure minimal downtime on your equipment, resulting in equipment that is up-to-date and ready to run for years to come.

Training Course: RL-420 Rotary Labeler

COURSE DESCRIPTION

This course provides information on the makeup, operation, and maintenance of the RL-420 Rotary Labeler. The instruction will cover the purpose, function, and operation of labeler components, as well as the sequence of operation, changeover, preventive maintenance, and troubleshooting. Documentation for the course is tailored for each machine configuration including any options. The course includes a mix of classroom time led by a qualified instructor as well as time on the floor for hands-on learning on the actual machine, allowing personnel to put the learned information into practical use.



COURSE PURPOSE

Upon completion of this course, the participant should be able to:

- Describe the purpose and function of components of the labeler
- Locate components within the labeler
- Describe how product moves through the labeler and how the machine components affect movement
- Describe parameters that require setting prior to production, and how incorrect settings affect operation
- Locate and repair faults within the labeler

This course is designed to be conducted during commissioning, allowing personnel to learn about and operate the labeler before going to live production, allowing a vertical startup. The course provides approximately 4 hours of classroom time and 4 hours of hands-on time for operators, supervisors, and mechanics, and approximately 6 hours of classroom time and 4 hours of hands-on time for electricians. Additional time includes discussion of the controls system, I/O points, and schematics. All courses discuss HMI screens applicable to various access levels. Course length depends on machine configuration and installed options. Multiple sessions can be conducted across all shifts to capture all affected personnel.



COURSE LENGTH

Customizable to individual requirements

PREREQUISITES

None

RECOMMENDED FOR

Operators, Process Technicians, Supervisors, Maintenance Technicians

DELIVERY METHOD

Lecture, Instructor-led discussion, Hands-on, with actual

Training Course: VR-72 Trunnion Labeler

COURSE DESCRIPTION

This course provides information on the makeup, operation, and maintenance of the VR-72 Trunnion Labeler. The instruction will cover the purpose, function, and operation of labeler components, as well as the sequence of operation, changeover, preventive maintenance, and troubleshooting. Documentation for the course is tailored for each machine configuration including any options. The course includes a mix of classroom time led by a qualified instructor as well as time on the floor for hands-on learning on the actual machine, allowing personnel to put the learned information into practical use.



COURSE PURPOSE

Upon completion of this course, the participant should be able to:

- Describe the purpose and function of components of the labeler
- Locate components within the labeler
- Describe how product moves through the labeler and how the machine components affect movement
- Describe parameters that require setting prior to production, and how incorrect settings affect operation
- Locate and repair faults within the labeler

This course is normally conducted during commissioning, allowing personnel to learn about and operate the labeler before going to live production, allowing a vertical startup. The course provides approximately 4 hours of classroom time and 4 hours of hands-on time for operators, supervisors, and mechanics, and approximately 6 hours of classroom time and 4 hours of hands-on time for electricians. The additional time includes discussion of the controls system, I/O points, and schematics. All courses discuss HMI screens applicable to various access levels. Course length depends on machine configuration and installed options. Multiple sessions are conducted across all shifts to capture all affected personnel.



COURSE LENGTH

Customizable to individual requirements

PREREQUISITES

None

RECOMMENDED FOR

Operators, Process Technicians, Supervisors, Maintenance Technicians

DELIVERY METHOD

Lecture, Instructor-led discussion, Hands-on, with actual

Aftermarket Service Agreements

DESCRIPTION

Customizable Aftermarket Service Agreements, built on our renowned customer support system. Pay annually or rolling monthly agreements available.

AGREEMENT BENEFITS

- Customized plans available
- Higher machine availability through reduced downtime
- Reduced service costs
- Early detection of part wear & failures
- Fixed cost for preventative maintenance
- Faster on-site emergency support

BASIC AGREEMENT

- 2 Semi Annual PM Visits
- 1 Emergency Visit *

PM VISITS INCLUDE

- One specially trained WLS Service Technician on-site for up to 8 hours per day with a daily schedule to be determined by site management
- Machine safety inspection
- Preventative maintenance inspection and tasks
- Verification of home reference positions
- Basic adjustments and repairs

- Performance of miscellaneous tasks as needed and/or requested, including refresher training
- Comprehensive Machine Evaluation Report

EXPAND THE AGREEMENT WITH

- 10% Parts Discount
- 10% Service Rate Discount
- 1 Year Extended Warranty **
- Creation of a plan that suits your operation

** If the emergency visit is not used during the agreement, receive a nominal credit to be used against parts orders*

*** Extended Warranty in year three and beyond contingent on contract in prior years.*

CONTACT US

For more information on any product or service you find in this catalog, please feel free to contact us:

WLS Service Mailbox • 856-273-3377 • <https://www.weilerls.com>

Rotary Labeler Kits (Base 827/828/829)

FULL ANNUAL REBUILD KIT FOR TRAPPED CAM LOWER KIT TOOLING

If your product is slipping during application, it may be a sign of worn parts or bearings seizing.

This kit provides all the required parts to replace potential wear parts in one planned operation. Save money by purchasing the kit instead of individual parts.

MAINTENANCE MINI KIT FOR TRAPPED CAM LOWER KIT

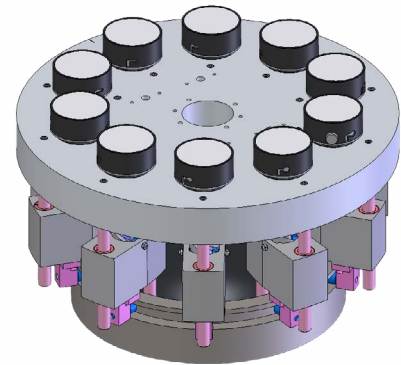
This kit provides the WLS suggested wear parts to have in your spares inventory to be prepared for unexpected breakdown or stoppages. Keep these in stock and replenish as needed as you use the parts

Save money by purchasing the kit instead of individual parts.

We recommend changing these as part of planned annual maintenance.

Installation can be provided through our service department.

Parts supplied in the kit are identified in the table below:



PART NUMBER	ITEM DESCRIPTION	MINI KIT QUANTITY	COMPLETE KIT QUANTITY
CF-1/2-SB	BEARING, CAM FOLLOWER, .500, .375, SEALS	5 / 7	20 / 28
CF-1-SB	BEARING, CAM FOLLOWER, 1.00, .625, SEALS	3 / 4	10 / 14
002-0043	SPRING PLUNGER, RETRACTABLE, .375-16	3 / 4	10 / 14
S-750	THOMSON SEAL	10 / 14	40 / 56
500-0126	7 RELEASE COMPOUND	1	1
SB960191-	WHITE NITRILE PAD	10 / 14	10 / 14

Please note: In the list provided above represents the **Mini Kit quantity** represents the minimum quantity of parts that should be kept on hand to ensure proper maintenance and reduce the risk of downtime. The **Complete Kit quantity** includes a full set of recommended components for a comprehensive service or rebuild.

Part Number(s)

10 STATION LABELER KIT PART #: KIT101 OR MINIKIT101

14 STATION LABELER KIT PART #: KIT101-14 OR MINIKIT101-14

Rotary Labeler Kits (Base 827/828/829)

FULL ANNUAL REBUILD KIT FOR OPEN CAM DESIGN ROTARY

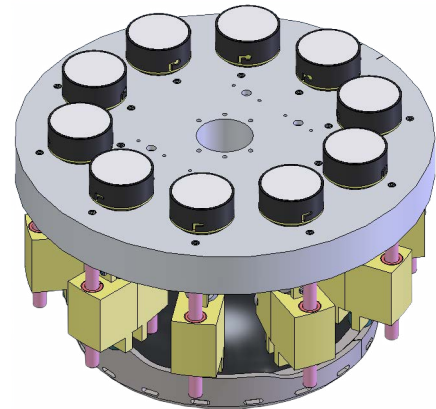
If your product is slipping during application, it may be a sign of worn parts or bearings seizing.

This kit provides all the required parts to replace potential wear parts in one planned operation. Save money by purchasing the kit instead of individual parts.

We recommend changing these as part of planned annual maintenance.

Installation can be provided through our service department.

Parts supplied in the kit are identified in the table below:



PART NUMBER	ITEM DESCRIPTION	MINI KIT QUANTITY	COMPLETE KIT QUANTITY
CF-1/2-SB	CAM FOLLOWER	4/7	20 / 28
013-0219	BEARING, THRUST NEEDLE, .500, .937, .0781	2/3	10 / 14
014-0205	THRUST WASHER, .500, .937, .063, STEEL	4/7	20 / 28
828-08-021	SPRING GUIDE	2/3	10 / 14
002-0043	SPRING PLUNGER, RETRACTABLE, .375-16	2/3	10 / 14
828-08-034	RETRACTABLE PLUNGER SHAFT	2/3	10 / 14
012-0110	COMPRESSION SPRING, 8"	2/3	10 / 14
S-750	SEAL - MOUNT SLIDE	10/14	40 / 56
CYR-1-1/4-S	CAM ROLLER	10/14	10 / 14
500-0126	7 RELEASE COMPOUND	1	1
SB960191-	WHITE NITRILE PAD	10 / 14	10 / 14

Please note: In the list provided above represents the **Mini Kit quantity** represents the minimum quantity of parts that should be kept on hand to ensure proper maintenance and reduce the risk of downtime. The **Complete Kit quantity** includes a full set of recommended components for a comprehensive service or rebuild.

Part Number(s)

10 STATION LABELER KIT PART #: KIT102 OR MINIKIT102

14 STATION LABELER KIT PART #: KIT102-14 OR MINIKIT102-14

Rotary Labeler Kits (Base 827/828/829)

FULL ANNUAL REBUILD KIT FOR UPPER CAM

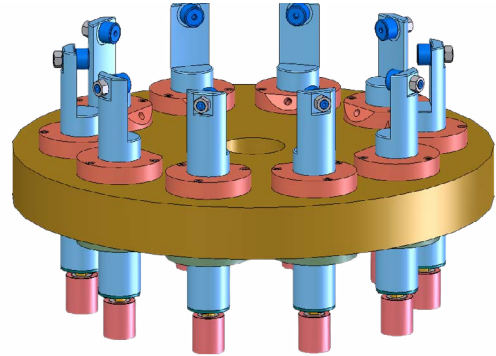
If you are experiencing air leaks or rotation noise, it may be time to change your seals bearings on the Upper Cam.

This is a full annual rotary rebuild kit for top tooling. Includes new bearings, pads and grease for a complete rebuild. Installation tool is included. Save money by purchasing the kit instead of individual parts.

We recommend changing these as part of planned annual maintenance.

Installation can be provided through our service department.

Parts supplied in the kit are identified in the table below:



PART NUMBER	ITEM DESCRIPTION	MINI KIT QUANTITY	COMPLETE KIT QUANTITY
S040029	TOP HOLD DOWN INSTALLATION KIT	1	1
CCF-1-SB	BEARING, CAM FOLLOWER, 1.00, .625, SEALS	3/4	10/14
019-0031	TOP TOOL ROD SEAL BOTTOM (8406-0212)	3/4	10/14
019-0014	INNER ROD SEAL 2-038	3/4	10/14
019-0030	TOP TOOL ROD SEAL TOP (8406-0200)	3/4	10/14
013-0234	BEARING, BALL, .375, .875, .281, SEALS	3/4	10/14
015-0076	RETAINING RING, EXTERNAL, .500, SHIELDS	3/4	10/14
013-0238	BEARING, BALL, .500, 1.125, .313	3/4	10/14
015-0074	RETAINING RING, EXTERNAL, .375	3/4	10/14
500-0126	7 RELEASE COMPOUND	1	1

Please note: The **Complete Kit quantity** includes a full set of recommended components for a comprehensive service or rebuild.

Part Number(s)

10 STATION LABELER KIT PART #: KIT103

14 STATION LABELER KIT PART #: KIT103-14

Weiler Label Head Standard & X2 Model

FULL ANNUAL REBUILD KIT PUSH PULL LEGACY 4" & 6"

If you are experiencing label application issues, loose web, web breaks, print variation, vision filed alignment, it may be a sign of worn parts in the push pull assembly.

This kit provides all the required parts to replace potential wear parts for 4" and 6" Push Pull label heads in both STD and X2 formats. Purchasing this kit allows complete rebuild in one planned operation. Save money by purchasing the kit instead of individual parts. We recommend changing these as part of planned annual maintenance.

We recommend changing these as part of planned annual maintenance.

Installation can be provided through our service department.

Parts supplied in the kit are identified in the table below:

PART NUMBER	ITEM DESCRIPTION	RECOMMENDED ON-HAND	COMPLETE KIT QUANTITY
505-31-003-4 OR 6	DRIVE ROLLER PULL HEAVY KNURL	1	1
S210203-4 OR 6	CAMMED RUBBER ROLLER ASSEMBLY	2	2
505-31-008	LINK	-	1
505-31-009	CAM # 1	-	1
505-31-011	CAM # 2	-	1
505-31-012	CAM PIN	-	2
505-31-020	DRIVE GEAR	-	2
505-31-037-4 OR 6	DRIVE ROLLER PUSH FINE KNURL	1	1
SB931322	GEAR & ADAPTER ASSY	-	1
E0360-045-1750-S	SPRING, EXTENSION, .360, 1.75, SS	1	1
E0360-058-3000-S	SPRING, EXTENSION, .360, 3.00, SS	2	2
6203-2RS	BEARING, BALL, 17MM, 40MM, 12MM, SEALS	-	4
SB990027	ACTUATOR BOLT	-	1
1402K31	NO TOX HD GREASE	1	1
015-0074	RETAINING RING, EXTERNAL, .375	-	2
015-0075	RETAINING RING, EXTERNAL, .469	-	2
015-0078	RETAINING RING, EXTERNAL, .669	-	6
015-0076	RETAINING RING, EXTERNAL, .500	-	6
011-0001 (98481A100)	KEY, WOODRUFF, .240, .125, .612, STEEL	-	2

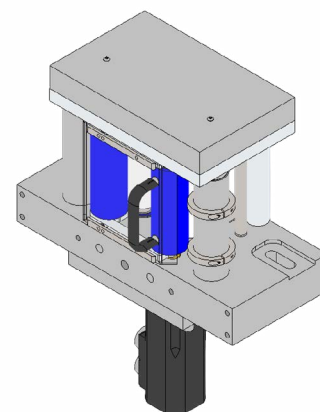
Please note: The list provided above represents the **Recommended On-Hand quantity**—the minimum quantity of parts that should be kept on hand to ensure proper maintenance and reduce the risk of downtime.

The **Complete Kit quantity** includes a full set of recommended components for a comprehensive service or rebuild.

Part Number(s)

4" LABEL HEAD KIT PART #: KIT104

6" LABEL HEAD KIT PART #: KIT105



Rotary Labeler Kit (Base 827/828/829)

ROTARY ADAPTER BEARING REPLACEMENT ASSEMBLY

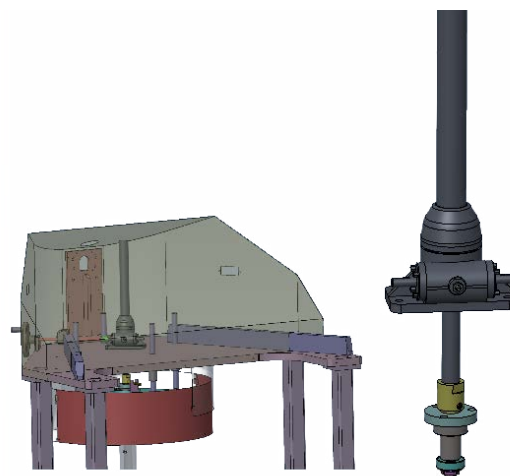
Are you experiencing air leak or rotation issues on your rotary labeling systems?

This kit provides all the required parts to replace potential wear parts in one planned operation. Save money by purchasing the kit instead of individual parts.

We recommend changing these as part of planned annual maintenance.

Installation can be provided through our service department.

Parts supplied in the kit are identified in the table below:



PART NUMBER	ITEM DESCRIPTION	COMPLETE KIT QUANTITY
827-01-006	ADAPTOR	1
019-0011	O-RING (KOR024B)	1
013-0203	BEARING, BALL, .750, 1.875, .563, OPEN	1
LS-7-2RS	BEARING, BALL, .625, 1.562, .438, SEALS	1
005-0144	WASHER, MULTI TANG LOCK, .563	1
007-0037	NUT, LOCK, N02	1
827-01-026	BEARING SPACER	1
827-01-008	COLUMN CAP	1

Please note: The **Complete Kit quantity** includes a full set of recommended components for a comprehensive service or rebuild.

Part Number(s)

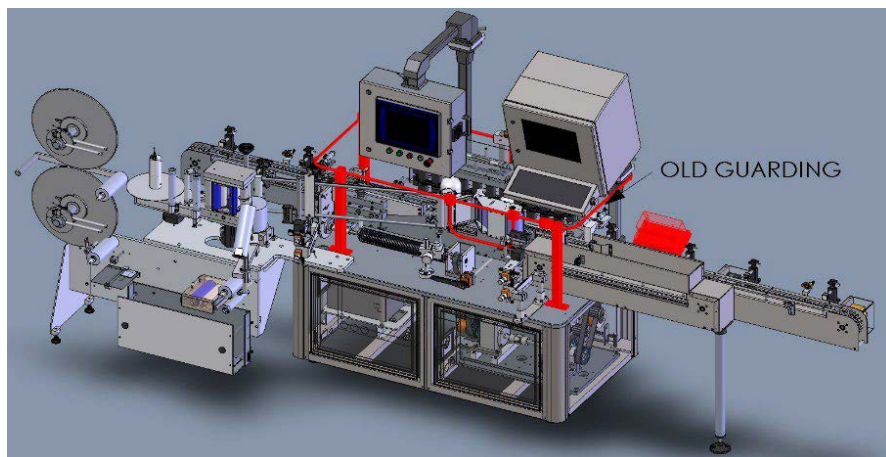
WLS PART #: KIT106

Upgrades & Retrofits

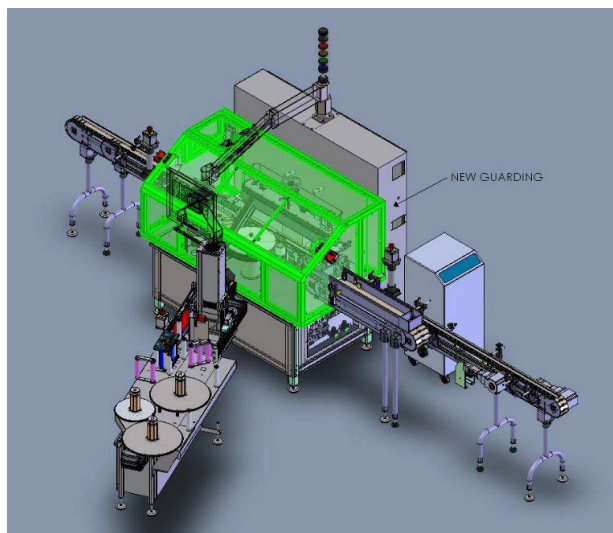
PERFORMANCE LEVEL D ISO 13849-1 COMPLIANT RETRO GUARDING PACKAGE

DESCRIPTION

- Includes updates to the safety circuit for the entire machine
- Eliminates safety concerns by ensuring compliance with the latest safety standards
- Clear visibility of operational components and line clearance
- Easy access to the machine
- Easy access for maintenance
- Minimal downtime – on-site installation
- Schematics below illustrate an example old and new style guarding



OLD STYLE "CAPACITIVE SENSING" GUARD



COMPLIANT FULLY ENCLOSED GUARDING

Upgrades & Retrofits

SLC TO COMPACTLOGIX CONVERSION

DESCRIPTION

- Gain higher performance, increased productivity, enhanced security and scalability by converting from SLC to CompactLogix
- This conversion kit:
 - Simplifies design and engineering time
 - Decreases cost significantly
 - Reduces wiring time and wiring errors
 - Decreases installation time significantly
- Many SLC components are now discontinued and unavailable to purchase
- More information, including videos about this conversion, can be found at this address: [WLS SLC to Compact Logix Conversion](#)

Migration solutions
SLC™ 500 to CompactLogix™ 5380 control system

Optimize productivity and minimize risk with modern technology
To stay ahead of the changing market demands, it is crucial to have migration solutions that can help lower the risk of maintaining legacy equipment and achieve increased productivity. Maximize your competitive advantage by collaborating with a partner who has the product, service and industry knowledge to develop your upgrade strategy.

Rockwell Automation and our partners will develop a modernization strategy with you to fit your application needs and long-term goals. You can migrate all at once or in phases, at the pace that is comfortable for you and to fit your budget. This will allow you to migrate with ease from SLC™ 500 to CompactLogix™ 5380 control system.

Product lifecycle
Use the [Product Lifecycle Status](#) search tool on the web to find specific lifecycle information by catalog number.

ACTIVE → **ACTIVE/MATURE** → **END OF LIFE** → **DISCONTINUED**

ACTIVE: Most current offering within a product category.
ACTIVE/MATURE: Product is fully supported, but a new product or family exists. Gain value by migrating.
END OF LIFE: Discontinued date announced — actively execute migrations and last time buys. Product generally orderable until the discontinued date.
DISCONTINUED: Product no longer manufactured or procured¹. Repair/exchange services may be available.

¹ Outages on specific items may occur prior to the Discontinued date.
² Limited stock may be available in run-out mode, regionally.

Allen-Bradley
ROCKWELL AUTOMATION

SLC™ 500 controllers and SLC™ I/O

CompactLogix™ 5380 controller and Compact 5000™ I/O system

Compact GuardLogix® 5380 SIL 3 controller

Compact GuardLogix® 5380 SIL 2 controller

Rockwell Automation

CLICK IMAGE TO VIEW INFORMATIONAL BROCHURE

Upgrades & Retrofits

SERVO DRIVE OBSOLESCENCE

DESCRIPTION

Epsilon EP Servo Drives are now obsolete with no direct replacement. Get ahead of the game and avoid a down equipment event without a replacement part.



- WLS can tailor a bespoke upgrade for each individual labeler, providing new hardware, programming updates and installation to ensure your equipment continues to run reliably with readily available spares.



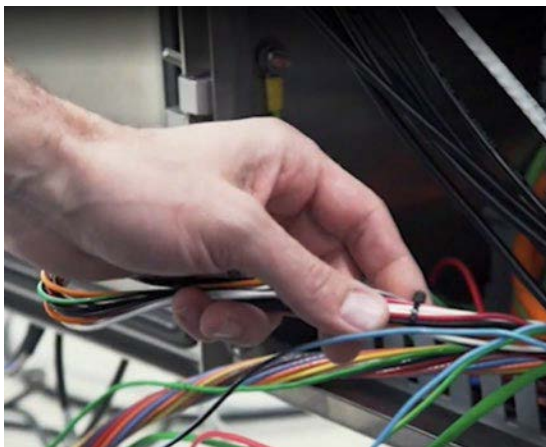
- This is a good opportunity to review other potential obsolescence such as PLC, HMI, Variable Frequency Drives, vision systems and printing systems or address other desired electrical or programming updates to bolt on to the upgrade.
- Our Engineering Team can review your equipment, identify obsolescence, and recommend upgrades.
- Use the contact information at the bottom to schedule an evaluation today!

Upgrades & Retrofits

COMPLETE MACHINE OBSOLESCENCE EVALUATION

DESCRIPTION

- Get ahead of the game and avoid a down equipment event without a replacement part.
- WLS can do an evaluation of your equipment to understand which items are obsolete.
- Update your equipment to the latest technology offered by WLS, to eliminate downtime due to obsolescence with no direct replacements available
- Major components such as PLC, HMI, servo drives, Variable Frequency Drives, vision systems and printing are of the most importance
- Use the contact information at the bottom to schedule an evaluation



Field Service

WLS maintains a dedicated staff of in-house employees to provide service for all mechanical, electrical and software related service issues. Our full time, factory trained field service technicians are routinely dispatched to provide installation and start-up assistance for new machines or modifications to existing equipment, as well as, emergency service when needed.

The responsibility for keeping our customers up and running with spare and emergency parts falls to the Weiler Labeling Systems Parts Department. Our experienced, dedicated team will assist you with ordering, technical support, service and/or training needs to help ensure that your packaging solutions operate as effectively and efficiently as possible.

In addition to servicing WLS labelers, we now service third party accumulation tables.

THIRD PARTY ACCUMULATION TABLES

UTILIZING OUR EXTENSIVE ASSEMBLY, INSTALLATION, AND SERVICE EXPERTISE WITH CONVEYORS, TABLES, TRANSFER EQUIPMENT

DESCRIPTION

- The ProMach family of companies has an extensive portfolio and history in transfer/conveyance/buffering equipment. WLS has developed extensive experience and strong collaboration with many of these brands. Until very recently, accumulation tables from one of our most prolific external partners were made right here in our home state of New Jersey. Our countless integrations of those units have made WLS true experts in the assembly, installation, and service of those tables.
- The relocation of one table manufacturer out of New Jersey and the Eastern U.S. has led to an influx of additional accumulation table talent and resources joining the ProMach and WLS organizations. For fast, cost-effective service on your accumulation table, you can now count on WLS, and the best service team in the industry.
- Use the contact information at the bottom to schedule an evaluation.



Why WLS Service

At WLS, we pride ourselves on having aftermarket service that is among the best – if not the best – in the industry. When you choose WLS as a partner, you will have the peace of mind that comes from knowing we'll support you every step of the way. From emergency service and preventive maintenance to spare parts, upgrades, and retrofits—as well as site installations and training—we're here to keep your operations running smoothly. **Customer satisfaction is our focus!**



Weiler is the world's leading designer and manufacturer of high-speed pressure-sensitive labeling machines for the pharmaceutical, food, beverage, personal care, and consumer markets. With more nearly three decades of experience in providing labeling, coding, inspection, and precision manufactured systems, Weiler is at the forefront of delivering customized solutions backed by a culture of unwavering customer care. As part of the ProMach Pharma business line, Weiler helps our packaging customers protect and grow the reputation and trust of their consumers. ProMach is performance, and the proof is in every package. Learn more about Weiler at www.WeilerLS.com and more about ProMach at ProMachBuilt.com.

1256 North Church Street
Moorestown, NJ 08057 USA
P: 1-866-200-3143
F: 1-856-231-9883
E: WLS.Parts@ProMachBuilt.com
WeilerLS.com